



QUINTA DAS CARVALHAS



Located in Pinhão, in the heart of the Douro Wine Region - a UNESCO World Heritage Site - Casa Redonda sits at the top of the hill of Quinta das Carvalhas, 500 meters above sea level.



Guests will be surprised by the originality of this house and its curious architecture.



Solarium



The entire house is surrounded by a wonderful garden, lawns and even a vegetable garden and orchard. Spend your day exploring the vineyards and the region and ending with a massage or a gym session. At dusk, enjoy dinner outdoors or in the comfortable dining room and then spend the evening in the games room, or simply enjoy the moonlight and the silence on the rooftop.



Winter terrace



Ground floor lounge



Open plan kitchen

With an absolutely stunning 360-degree panoramic view, this property offers a unique experience, combining the rustic charm of the Douro valley with carefully designed and decorated interiors, creating an atmosphere of comfort and well-being.





The house, all round, is distributed over three floors, with the entrance floor comprising of a social area and a bedroom area. This social area with direct access to the garden, has a living room with a fireplace, connecting with the American-style kitchen, a breakfast room, a dining room and a guest bathroom. The bedroom area is distributed across a hall with 3 suites.



Lobby



The main entrance



Access to the suites on the first floor



The first floor consists of a large living room also with a fireplace which provides several settings and a corridor leading to the remaining 3 suites.



The second floor (283m²) is dedicated to the house's leisure area, where guests can enjoy a large gym with views over the Douro River, a massage room, a lounge for games and reading and another lounge with a television and a fireplace. The rooftop completes the experience of the house, with a lounge area, infinity pool and a bar, providing the best views of the Douro.



Living area



Kitchen



Breakfast room



The dinning room seats 12 people





Tv lounge



Reading Room



Drawing Room



Games Room



SUITE 1 - 35m2



Original Mid-Century Marble Bathrooms

walk-in showers in all bathrooms

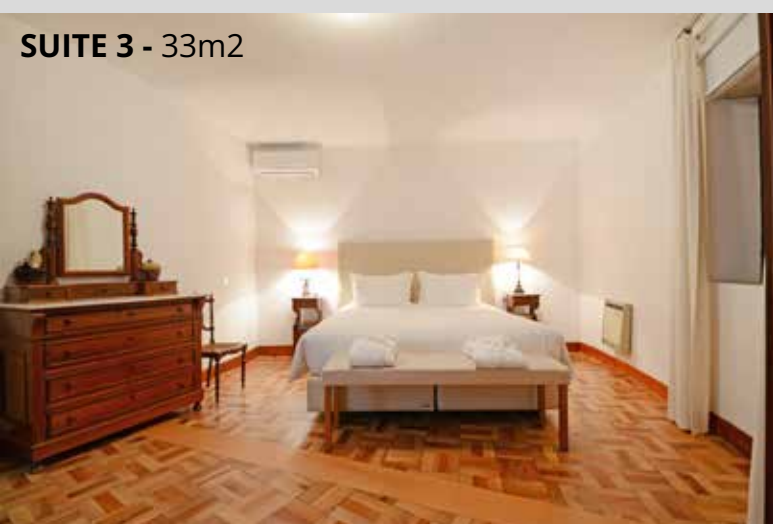
SUITE 2 - 34m2



Equipment:

- AC in all rooms/lounges
- 3 fireplaces
- Fully equipped kitchen
- 2 televisions
- Wi-Fi throughout the house;
- Pool table
- Games table
- Massage table
- Gym equipment
- 2 social WC's

SUITE 3 - 33m2



SUITE 4 - 49m²



Characteristics:

- 3 lounges with fireplaces
- (Ground floor: 43m²; 1st floor: 107m², 2nd floor: 45m²)
- 1 dining room (43m²)
- 1 breakfast room (36m²)
- 1 open space kitchen (55m²) with an area for meals (43m²)
- 1 games and reading area (70m²)
- 1 drawing and Tv area (70m²)
- 1 massage room (15m²)
- 1 fully equipped gym (90m²)
- Garden and orchard
- Swimming pool / solarium
- Rooftop (343m²)
- Parking

SUITE 5 - 27m²



SUITE 6 - 24m²

